

Riverside County

City Population Estimates with Annual Percent Change 2006 & 2007

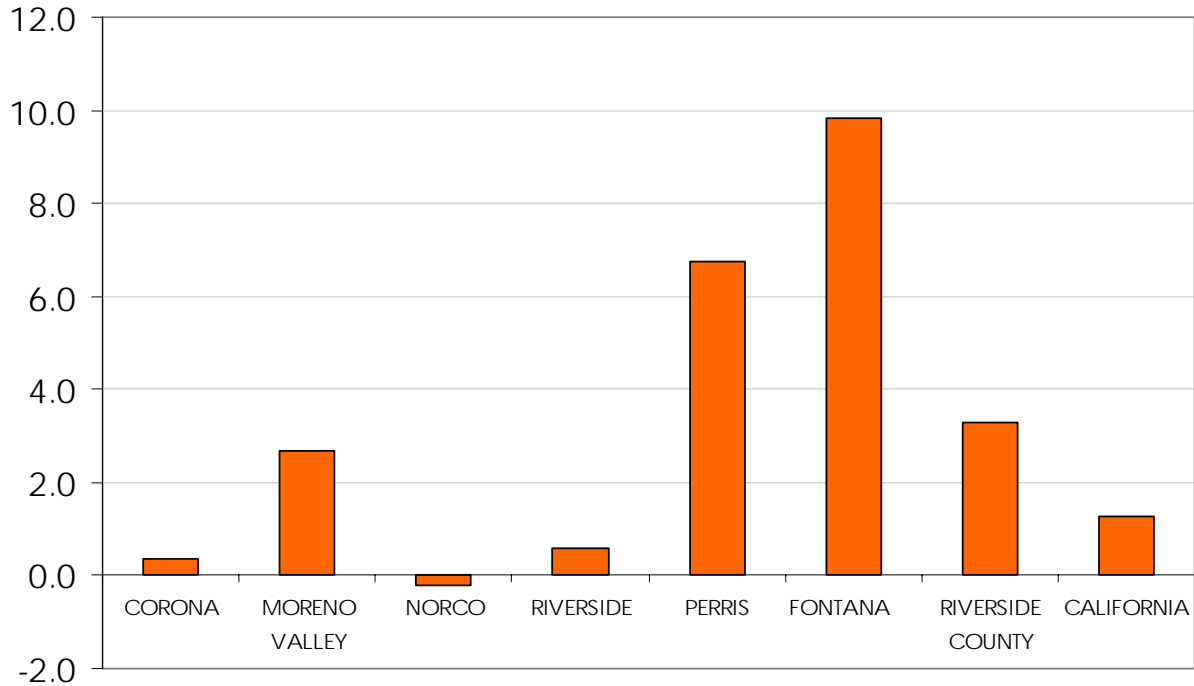
City/County	Total Population		Percent Change
	2006	2007	
RIVERSIDE	1,966,607	2,031,625	3.3
BANNING	28,321	28,272	-0.2
BEAUMONT	23,304	28,250	21.2
BLYTHE	22,269	22,625	1.6
CALIMESA	7,465	7,414	-0.7
CANYON LAKE	11,013	10,969	-0.4
CATHEDRAL CITY	51,435	52,115	1.3
COACHELLA	35,449	38,486	8.6
CORONA	145,659	146,164	0.3
DESERT HOT SPRINGS	22,163	23,544	6.2
HEMET	70,015	71,705	2.4
INDIAN WELLS	4,899	4,942	0.9
INDIO	72,142	77,146	6.9
LAKE ELSINORE	41,271	47,634	15.4
LA QUINTA	38,604	41,092	6.4
MORENO VALLEY	175,769	180,466	2.7
MURRIETA	93,567	97,257	3.9
NORCO	27,418	27,361	-0.2
PALM DESERT	49,879	49,752	-0.3
PALM SPRINGS	46,754	46,858	0.2
PERRIS	47,463	50,663	6.7
RANCHO MIRAGE	16,783	16,944	1.0
RIVERSIDE	289,747	291,398	0.6
SAN JACINTO	31,280	34,345	9.8
TEMECULA	94,575	97,935	3.6
BALANCE OF COUNTY	519,363	538,288	3.6
RIVERSIDE COUNTY	1,966,607	2,031,625	3.3

RCCD Service Area

General Population – Selected Cities

2007

Percentage Growth, General Population, 2006-07
Selected Cities in RCCD Service Area



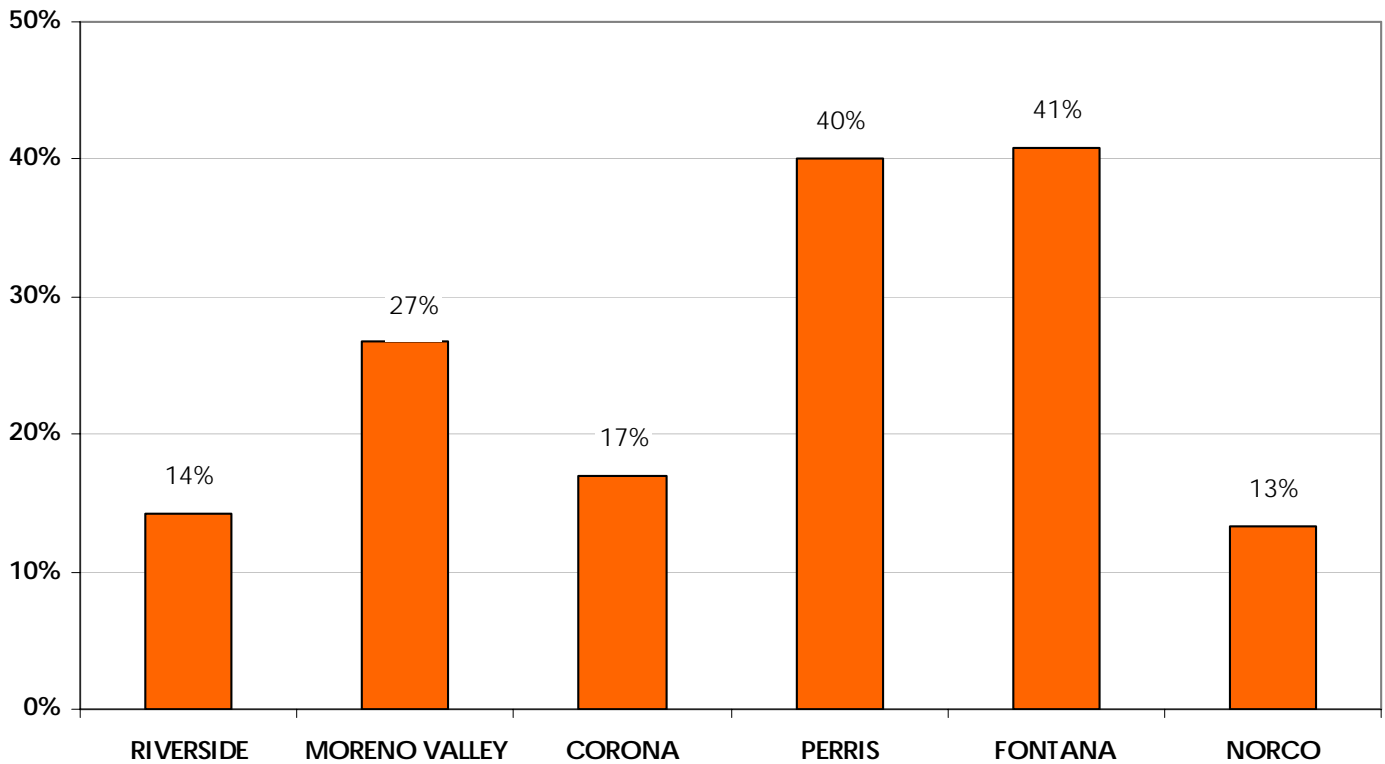
	2007	Change from 2006-07
RIVERSIDE COUNTY	2,031,625	3.3
CORONA	146,164	0.3
MORENO VALLEY	180,466	2.7
NORCO	27,361	-0.2
RIVERSIDE	291,398	0.6
PERRIS	50,663	6.7
SAN BERNARDINO COUNTY	2,028,013	1.7
FONTANA	181,640	9.8

Source: State of California, Department of Finance, *E-1 Population Estimates for Cities, Counties and the State with Annual Percent Change* — January 1, 2005 and 2006. Sacramento, California, May 2007.

Riverside Community College District
RCCD Service Area

Population Changes for selected cities 2000-07

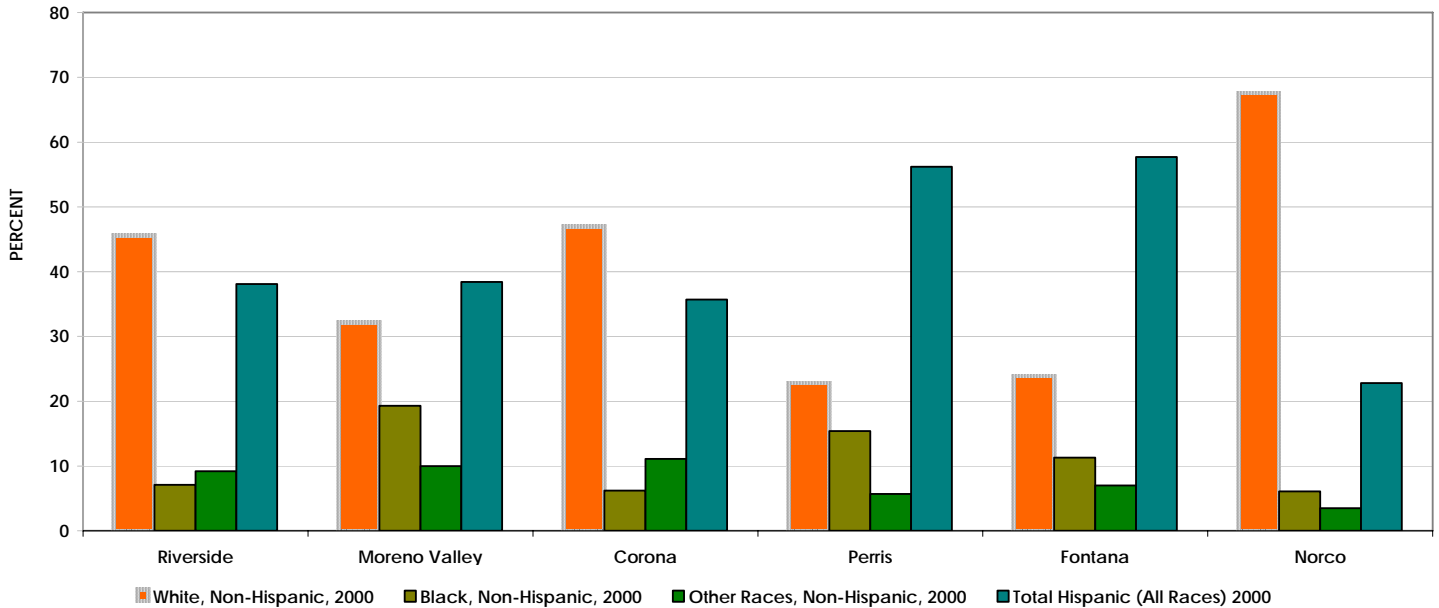
2000-07 Percentage Change in Population for RCCD Service Area Cities



	RIVERSIDE	MORENO VALLEY	CORONA	PERRIS	FONTANA	NORCO
Population, 2000	255,166	142,381	124,966	36,189	128,929	24,157
Population, 2007	291,398	180,466	146,164	50,663	181,640	27,361
Percent Change, 2000-2007	14%	27%	17%	40%	41%	13%

Riverside Community College District RCCD Service Area Ethnicity 2000

2000 Ethnicity for RCCD Service Area Cities

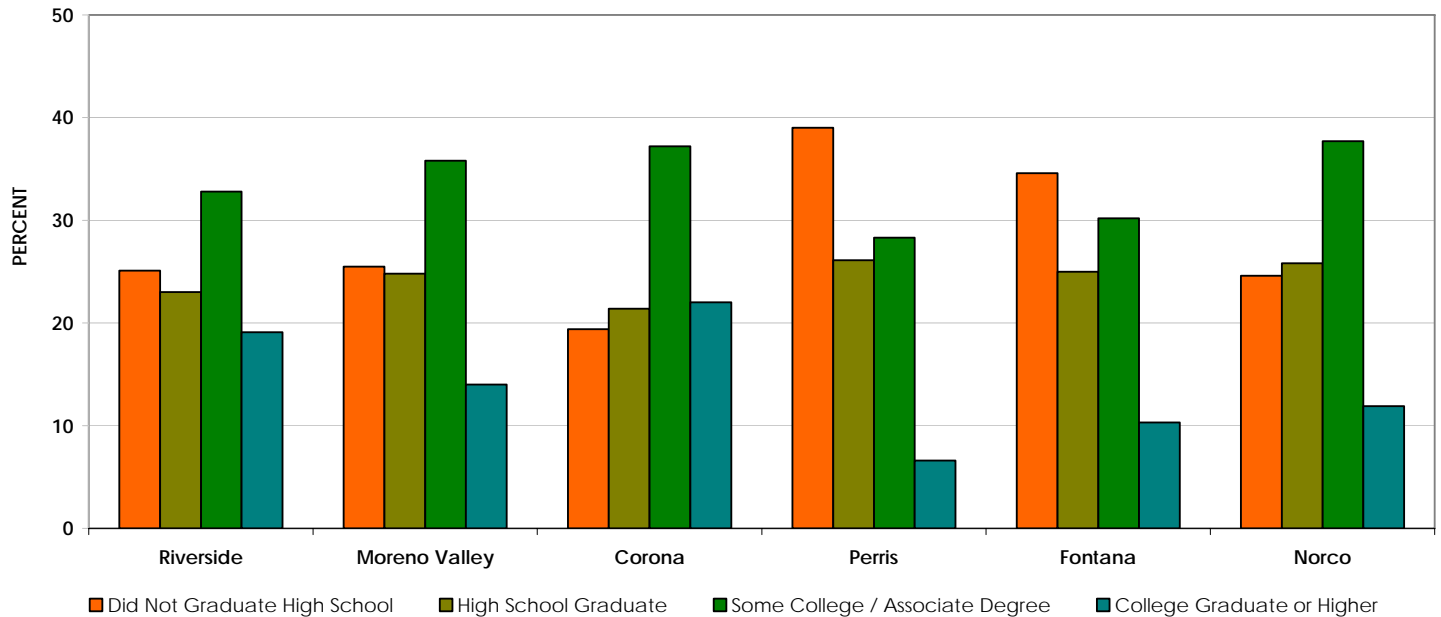


(Students from these cities accounted for 75% of all Fall 2005 students.)

	Riverside	Moreno Valley	Corona	Perris	Fontana	Norco
White, Non-Hispanic, 2000	116,356	45,847	58,734	8,251	30,814	16,330
Black, Non-Hispanic, 2000	18,117	27,480	7,748	5,573	14,569	1,474
Other Races, Non-Hispanic, 2000	23,475	14,238	13,871	2,063	9,025	845
Total Hispanic (All Races) 2000	97,218	54,674	44,613	20,338	74,392	5,508
Total Population, 2000	255,166	142,239	124,966	36,225	128,800	24,157

Riverside Community College District RCCD Service Area Educational Attainment 2000

2000 Educational Attainment for RCCD Service Area Cities



(Students from these cities accounted for 75% of all Fall 2005 students.)

	Riverside	Moreno Valley	Corona	Perris	Fontana	Norco
Did Not Graduate High School	64,047	36,307	24,243	14,114	44,609	5,943
High School Graduate	58,688	35,310	26,743	9,445	32,232	6,233
Some College / Associate Degree	83,694	50,972	46,487	10,241	38,937	9,107
College Graduate or Higher	48,737	19,933	27,493	2,388	13,280	2,875
Total Population	255,166	142,523	124,966	36,189	129,058	24,157

RCCD Service Area

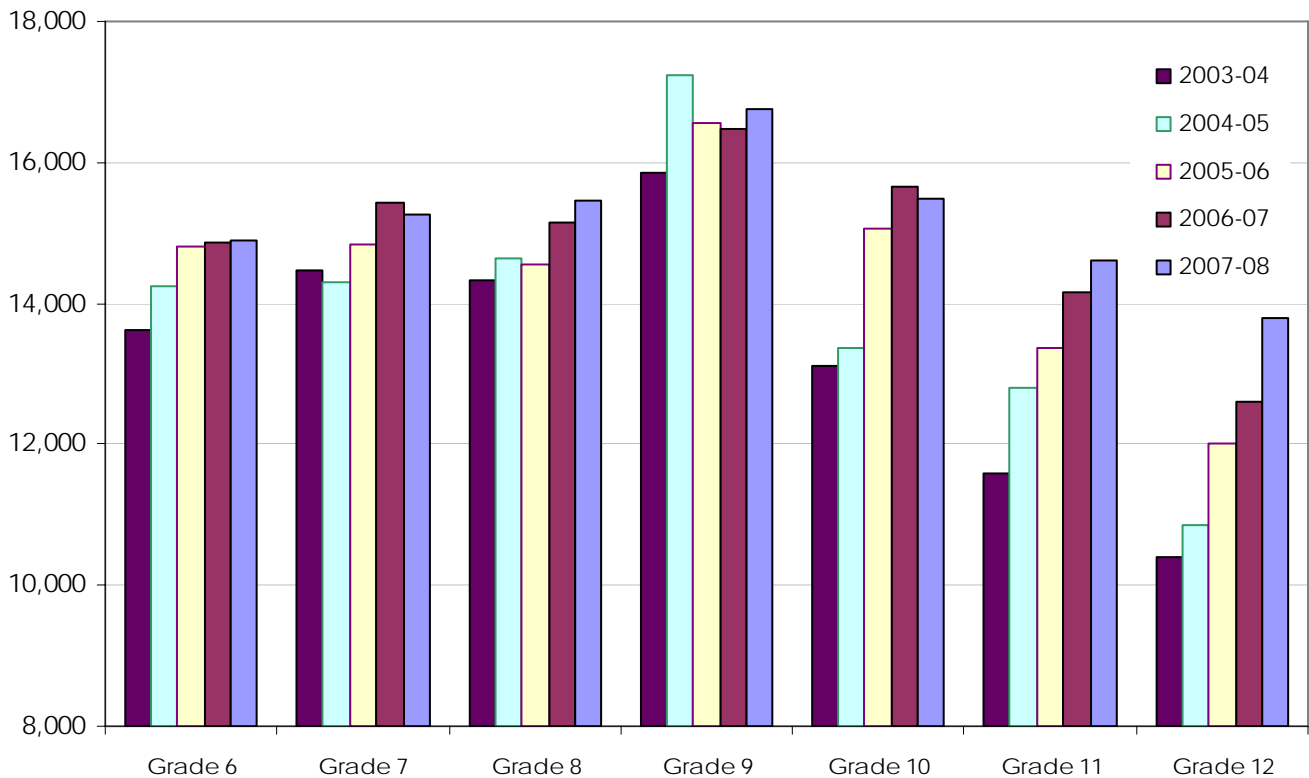
Feeder School Enrollments by district and grade levels, 2003-04 through 2007-08

Feeder District		Grade 6	Grade 7	Grade 8	Grade 9	Grade 10	Grade 11	Grade 12
Alvord	2007-08	1,506	1,605	1,601	2,156	1,484	1,211	1,000
Alvord	2006-07	1,590	1,601	1,625	2,119	1,545	1,167	905
Alvord	2005-06	1,564	1,625	1,542	1,910	1,201	1,265	1,302
Alvord	2004-05	1,650	1,548	1,671	1,754	1,142	1,437	1,152
Alvord	2003-04	1,496	1,646	1,604	1,366	1,451	1,254	1,156
		Grade 6	Grade 7	Grade 8	Grade 9	Grade 10	Grade 11	Grade 12
Corona-Norco	2007-08	4,020	4,105	4,149	4,140	4,101	4,101	4,038
Corona-Norco	2006-07	3,985	4,063	3,916	3,976	4,043	3,918	3,665
Corona-Norco	2005-06	3,833	3,719	3,724	3,892	3,842	3,597	3,266
Corona-Norco	2004-05	3,589	3,612	3,638	3,864	3,584	3,237	3,071
Corona-Norco	2003-04	3,466	3,604	3,640	3,532	3,237	3,072	2,905
		Grade 6	Grade 7	Grade 8	Grade 9	Grade 10	Grade 11	Grade 12
Jurupa	2007-08	1,634	1,628	1,689	1,679	1,574	1,596	1,533
Jurupa	2006-07	1,613	1,724	1,660	1,568	1,654	1,669	1,372
Jurupa	2005-06	1,769	1,711	1,587	1,707	1,742	1,531	1,458
Jurupa	2004-05	1,735	1,638	1,708	1,765	1,581	1,561	1,322
Jurupa	2003-04	1,624	1,705	1,753	1,600	1,626	1,409	1,260
		Grade 6	Grade 7	Grade 8	Grade 9	Grade 10	Grade 11	Grade 12
Moreno Valley	2007-08	2,878	2,956	2,993	3,000	2,952	2,878	2,794
Moreno Valley	2006-07	2,945	2,950	3,046	3,005	2,999	2,787	2,757
Moreno Valley	2005-06	2,891	3,007	2,922	3,272	3,121	2,837	2,246
Moreno Valley	2004-05	2,874	2,848	2,907	3,199	3,061	2,705	2,103
Moreno Valley	2003-04	2,726	2,857	2,850	3,106	2,984	2,508	1,930
		Grade 6	Grade 7	Grade 8	Grade 9	Grade 10	Grade 11	Grade 12
Riverside	2007-08	3,277	3,384	3,421	4,265	3,827	3,452	3,013
Riverside	2006-07	3,202	3,515	3,378	4,281	4,030	3,242	2,779
Riverside	2005-06	3,338	3,343	3,341	4,478	3,864	3,116	2,725
Riverside	2004-05	3,152	3,360	3,503	4,957	3,171	2,952	2,564
Riverside	2003-04	3,171	3,566	3,397	4,612	3,121	2,873	2,522
		Grade 6	Grade 7	Grade 8	Grade 9	Grade 10	Grade 11	Grade 12
Val Verde	2007-08	1,577	1,594	1,597	1,520	1,545	1,372	1,411
Val Verde	2006-07	1,539	1,589	1,510	1,535	1,385	1,365	1,120
Val Verde	2005-06	1,425	1,439	1,449	1,311	1,295	1,035	1,004
Val Verde	2004-05	1,245	1,284	1,216	1,697	837	923	635
Val Verde	2003-04	1,145	1,077	1,083	1,629	688	470	642

RCCD Service Area

Feeder School District Enrollments by grade levels, 2003-04 through 2007-08

**Feeder School Enrollments by Grade Levels
2003-04 through 2007-08**



		Grade 6	Grade 7	Grade 8	Grade 9	Grade 10	Grade 11	Grade 12
District Totals	2007-08	14,892	15,272	15,450	16,760	15,483	14,610	13,789
District Totals	2006-07	14,874	15,442	15,135	16,484	15,656	14,148	12,598
District Totals	2005-06	14,820	14,844	14,565	16,570	15,065	13,381	12,001
District Totals	2004-05	14,245	14,290	14,643	17,236	13,376	12,815	10,847
District Totals	2003-04	13,628	14,455	14,327	15,845	13,107	11,586	10,415

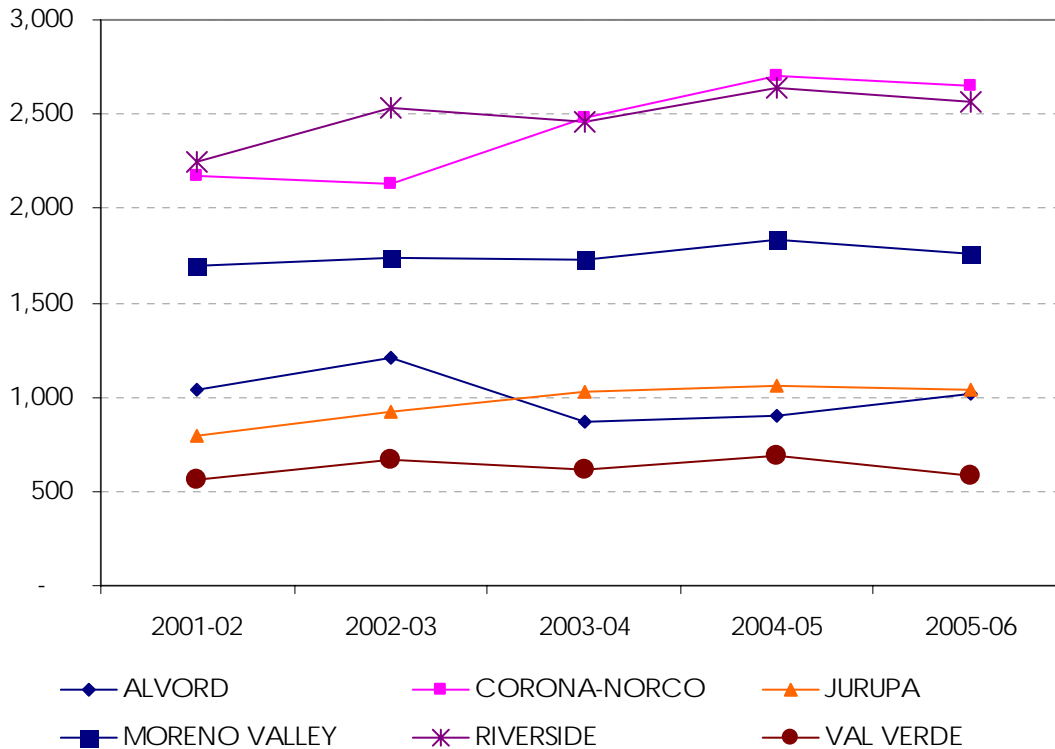
Source: California Department of Education Data Quest web page; <http://data1.cde.ca.gov/dataquest>. Sacramento, California, August 2006. RCCD feeder school districts include Alvord, Corona-Norco, Jurupa, Moreno Valley, Riverside and Val Verde.

RCCD Service Area

RCCD Feeder High School District Graduates

2001-02 through 2005-06

Graduates from RCCD Feeder School Districts



Graduates from RCCD Feeder School Districts, 2001-02 to 2005-06

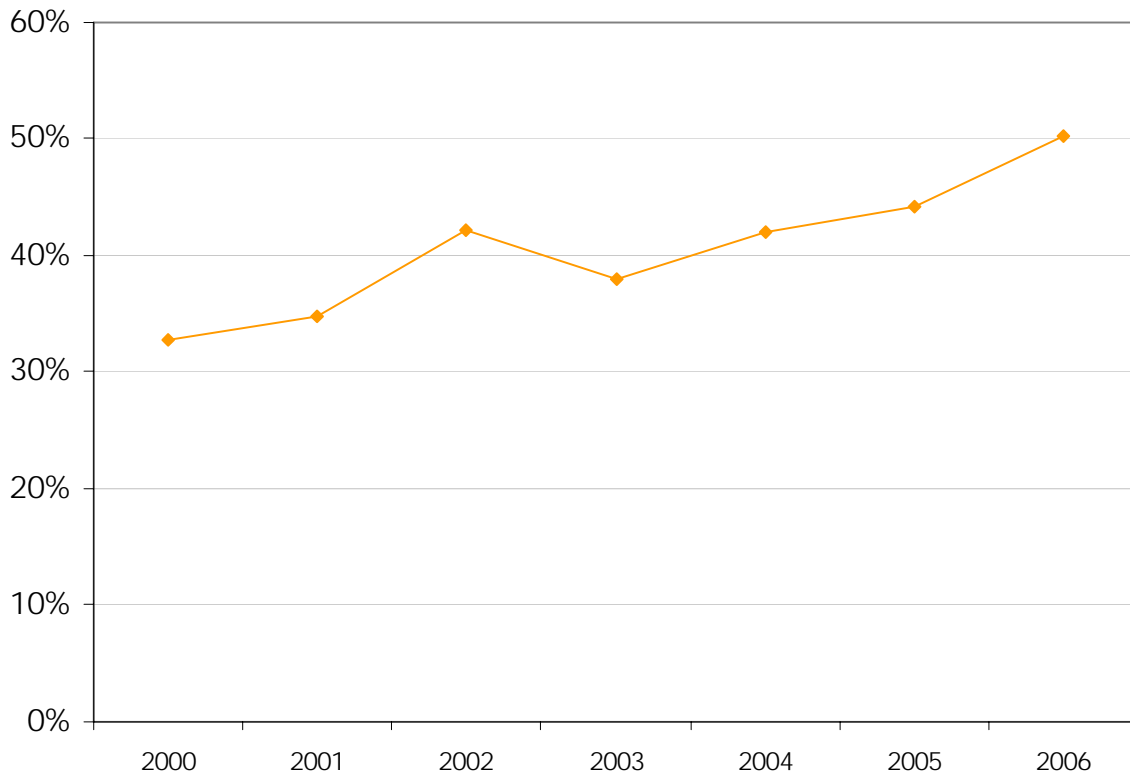
	2001-02	2002-03	2003-04	2004-05	2005-06	Change from 2001-02 to 2005-06
ALVORD	1,035	1,207	872	899	1,020	-1%
CORONA-NORCO	2,170	2,134	2,479	2,707	2,647	22%
JURUPA	797	923	1,029	1,055	1,034	30%
MORENO VALLEY	1,694	1,738	1,724	1,837	1,762	4%
RIVERSIDE	2,248	2,529	2,455	2,636	2,566	14%
VAL VERDE	558	664	618	685	578	4%
TOTAL	8,502	9,195	9,177	9,819	9,607	13%

Source: California Department of Education Data Quest web page; <http://data1.cde.ca.gov/dataquest>. Sacramento, California, April 2008.

RCCD Service Area

College Going Rates for RCCD Feeder Districts, 2000-2006

RCCD College Going Rates, 2000-2006



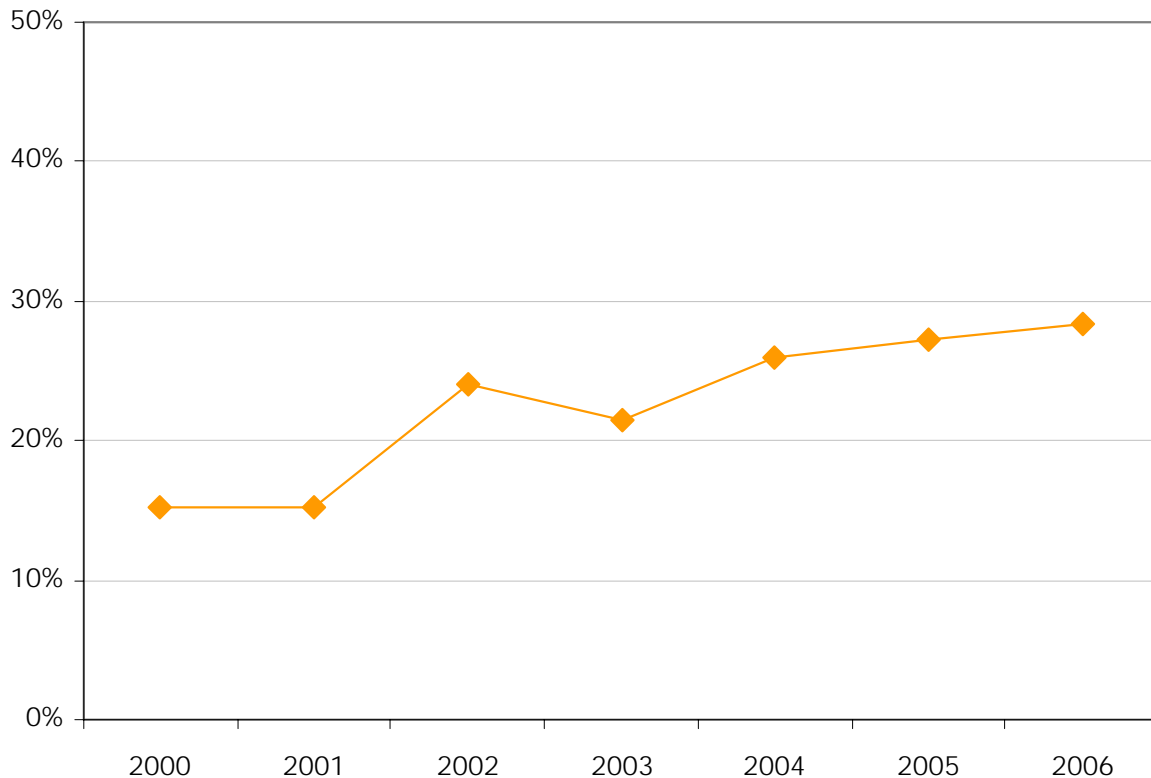
College Going Rate

2000	32.9%
2001	34.7%
2002	42.2%
2003	37.9%
2004	42.0%
2005	44.2%
2006	50.2%

"College Going Rate" is the percent of recent high school graduates from our service area who are 19 years and under and attending any community college, California State University, or University of California Campus during the fall term for the first-time. High school districts in RCCD's service area include Alvord, Corona-Norco, Jurupa, Moreno Valley, Riverside and Val Verde.

RCCD Service Area Capture Rates for RCCD Feeder Districts, 2000-2006

RCCD Capture Rates, 2000-2006



	Capture Rate
2000	15.2%
2001	15.2%
2002	24.0%
2003	21.4%
2004	25.9%
2005	27.3%
2006	28.4%

“Capture Rate” is the percent of recent high school graduates from our service area who are 19 years and under and attending Riverside Community College during the fall term for the first-time. High school districts in RCCD’s service area include Alvord, Corona-Norco, Jurupa, Moreno Valley, Riverside and Val Verde.